

What would happen if a tough Komodo dragon came face-to-face with a deadly king cobra? What if they were both hungry? If they had a fight, who do you think would win?



SCIENTIFIC NAME OF KOMODO DRAGON: "Varanus komodoensis"

Meet the Komodo dragon. The Komodo dragon is the largest lizard in the world. It grows up to ten feet long and can weigh three hundred pounds.

DEFINITION

A reptile is a cold-blooded animal covered in scales. Turtles, snakes, lizards, crocodiles, and alligators are reptiles.



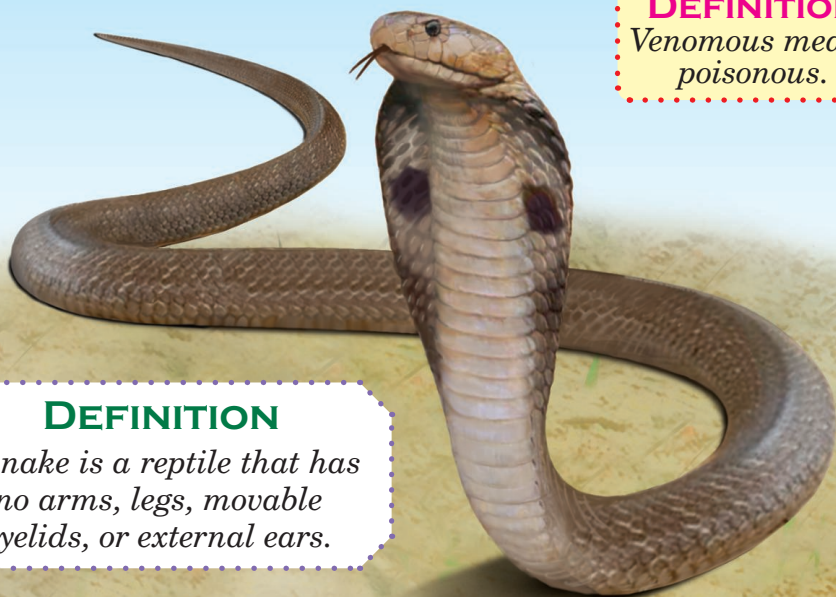
FACT

Komodo dragons live on four Indonesian islands: Komodo, Rinca, Flores, and Gili Motang.



SCIENTIFIC NAME OF KING COBRA: "Ophiophagus hannah"

Meet the king cobra. A king cobra can grow up to eighteen feet long. The king cobra is a venomous snake that can weigh up to twenty pounds.



DEFINITION
*Venomous means
poisonous.*

DEFINITION

A snake is a reptile that has no arms, legs, movable eyelids, or external ears.

FACT

King cobras live in India, China, Southeast Asia, Indonesia, and the Philippines.



TEETH

Komodo dragons have teeth. Their teeth are unusual for a land animal. They are serrated, like a shark's teeth.



DANGEROUS FACT

Serrated means jagged, like a saw.